

Interchangeable Lens Cameras and Compact Digital Cameras

Firmware Update Procedure

In this document, X.X.X (where X is a number) indicates the firmware version.

Trademarks

Company names and product names, etc., that appear throughout this document represent the registered trademarks of the respective companies.



Firmware Update Cautions

- If the power is cut off during the firmware update, the camera may malfunction.
 - Use a fully charged Battery Pack or dedicated AC Adapter Kit (Optional) for the firmware update.
 - Please be absolutely sure not to turn the camera's power switch to OFF during the firmware update.
 - During the firmware update, please do not open the card slot cover.
- During the firmware update, please do not operate any of the camera's buttons, dials or switches.
- Before the firmware update, please remove the lens, external Speedlite, and all other accessories from the camera.

Firmware Update Preparation

The following items are required to perform this firmware update. Please prepare these items in advance before performing the update.

Camera body	The camera on which you will perform the firmware update
Power supply	Dedicated Battery Pack (The battery pack must be fully charged) or dedicated AC Adapter Kit (Optional)
Card	Memory card supported by the camera *Please see the camera's instruction manual for details on which memory cards are supported by each camera model.
USB cable	USB cable supported by the camera
Card reader	Commercially available memory card reader (the PC's card slot can also be used)
Firmware update file	The downloaded firmware file

How to Update the Firmware

Update the firmware using either one of the methods below.

1. **Use the card reader to update the camera's firmware**
2. **Use EOS Utility to update the camera's firmware**

The method of using EOS Utility to update the firmware is not supported on some camera models. If it is not supported, perform the update according to "**1. Use the card reader to update the camera's firmware**".

1. Use the card reader to update the camera's firmware

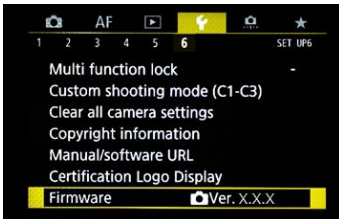
The camera operations and the menu's display format/structure may differ depending on the model.

Copy the firmware to the card

1. Initialize the card with the camera.
Please see the camera's instruction manual for information on how to initialize the card.
2. Insert the card into the card reader, and copy the downloaded firmware file to card's root directory.

Update the firmware

1. Remove the card from the card reader, and insert into the camera.
2. Turn the camera's power on and set the shooting mode to <P>.
3. Press the <MENU> button to display the menu.
4. Select [**Firmware Ver.X.X.X**] from the [**Set-up**] tab on the menu, and press the <SET> button.

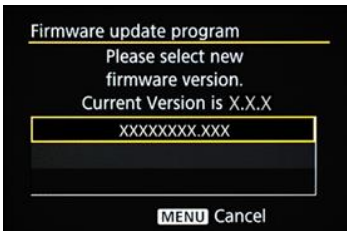


5. When the firmware update screen is displayed, select [**OK**] and press the <SET> button.



If this screen is not displayed, the firmware may not have been correctly copied to the card. Please start over from the "Copy the firmware to the card" step on this page.

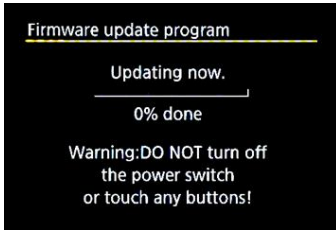
6. The firmware update file name will be displayed, so press the <SET> button.



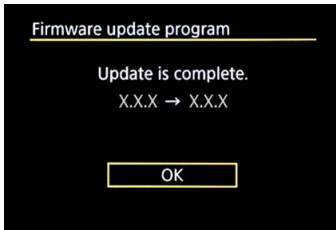


7. Check the displayed screen, select [OK], and press the <SET> button. Pressing the <SET> button will start the firmware update.

Do not turn the camera's power off or operate the buttons, etc., while the update is in progress. Doing so may damage the camera.



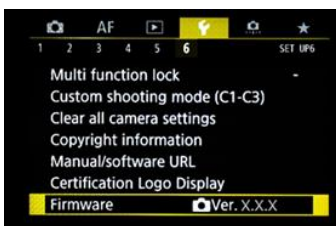
In the unlikely event that an error occurs during the firmware update, please remove the battery and stop the update procedure. Check the remaining battery level and the firmware on the card, and if there are no problems, start over the procedure from the beginning. If the update procedure cannot be correctly completed, please contact a Canon service center.



8. Check the update completed screen, and press the <SET> button. *Depending on the model, the "Update is complete" screen may not be displayed.

This completes the firmware update. Please initialize the card before use.

Verifying the firmware Version



1. Turn the camera's power on and set the shooting mode to <P>.
2. Press the <MENU> button to display the menu.
3. Check [Firmware Ver. X.X.X] in the [Set-up] tab in the menu.

2. Use EOS Utility to update the camera's firmware

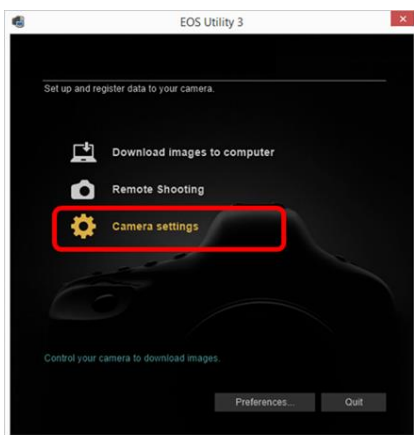
The method of using EOS Utility to update the firmware is not supported on some camera models. If it is not supported, perform the update according to "**1. Use the card reader to update the camera's firmware**".

Connect the camera and the computer

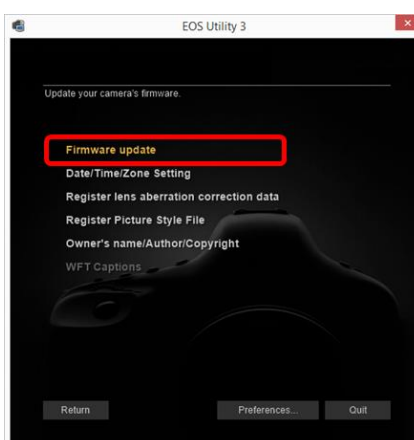
1. Insert the card into the camera and turn the power on.
2. Format the card.
Please see the camera's instruction manual for information on how to initialize the card.
3. Set the shooting mode to <P>.
4. Connect the camera to a computer via a USB cable.

Update the firmware

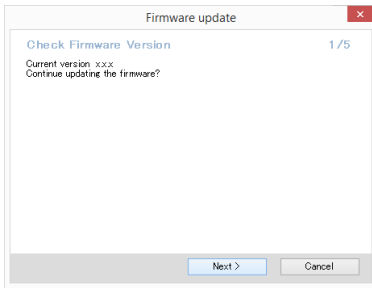
1. Start EOS Utility.
2. Click [**Camera settings**] on the EOS Utility screen.



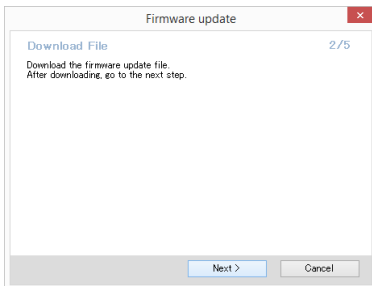
3. Click [**Firmware update**].



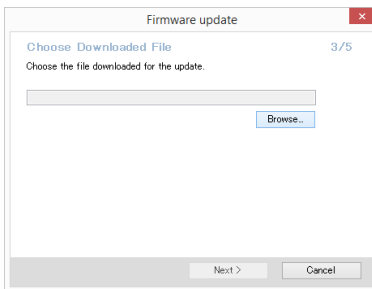
4. Click [**Next**].



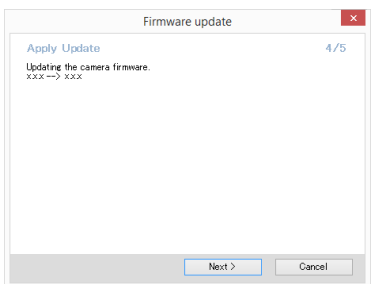
5. Click [**Next**].



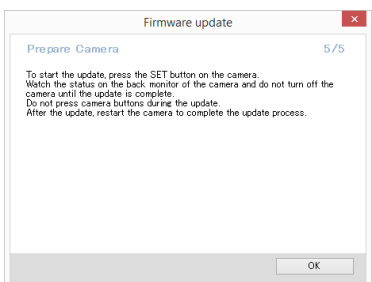
6. Click [**Browse**], select the file, and then click [**Next**].

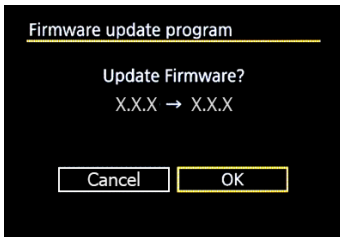


7. Click [**Next**].



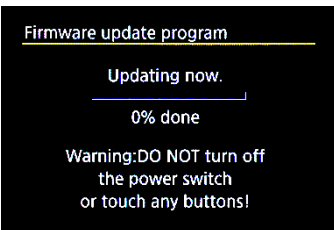
8. Click [**OK**].



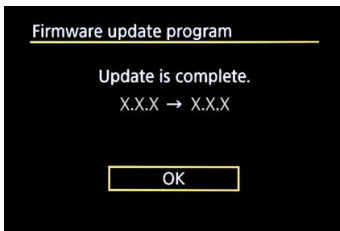


9. Check the displayed screen, select [OK], and press the <SET> button. Pressing the <SET> button will start the firmware update.

Do not turn the camera's power off or operate the buttons, etc., while the update is in progress. Doing so may damage the camera.



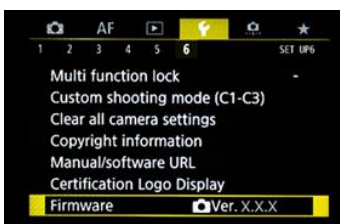
In the unlikely event that an error occurs during the firmware update, please remove the battery and stop the update procedure. Check the remaining battery level and the firmware on the card, and if there are no problems, start over the procedure from the beginning. If the update procedure cannot be correctly completed, please contact a Canon service center.



10. Check the update completed screen, and press the <SET> button. *Depending on the model, the "Update is complete" screen may not be displayed.

This completes the firmware update. Please initialize the card before use.

Verifying the firmware Version



1. Turn the camera's power on and set the shooting mode to <P>.
2. Press the <MENU> button to display the menu.
3. Check [Firmware Ver. X.X.X] in the [Set-up] tab in the menu.